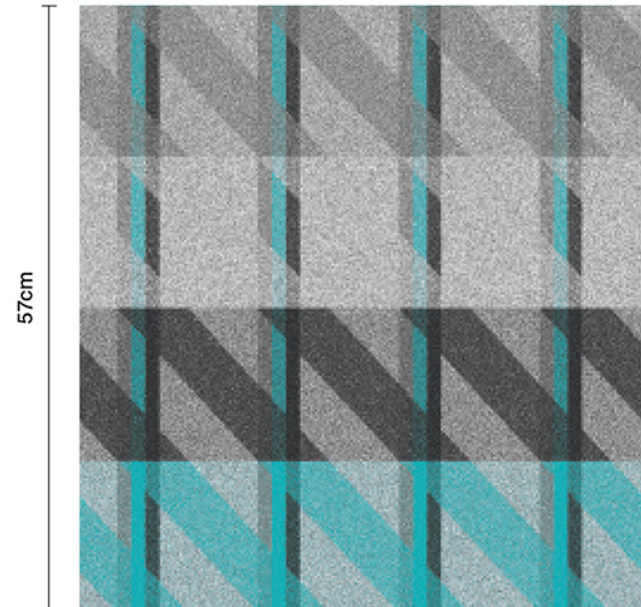


Contact
Reach LDC06

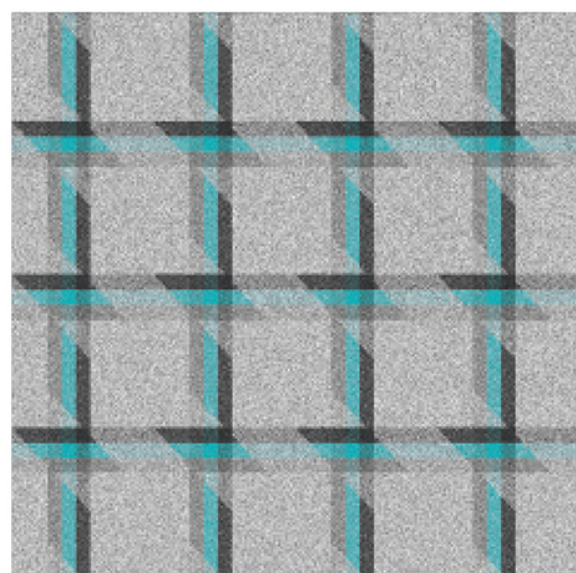


14.5cm



14.5cm

Balance
Focus LDB06



Landscape Collection



E

Composition	95% Virgin Wool, 5% Polyamide. Non metallic dyestuffs.
Width	140cm minimum
Weight	400g/m ² ±5% (560g/lin.m. ±5%)
Pattern Repeat	Balance: Width 14.5cm, Length 14.5cm Contact: Width 14.5cm, Length 57cm
Abrasion	60,000 Martindale cycles 5 year guarantee (full details available)
Flammability	AS 1530.3, BS EN 1021 - 1:2006 (cigarette) BS EN 1021 - 2:2006 (match) BS 7176:2007 Low Hazard Optional - please specify when ordering: BS 5852:2006 Section 4 Ignition Source 5 when FR treated BS 7176:2007 Medium Hazard when FR treated Note: Flammability performance is dependent on components used.
Light Fastness	5 (ISO 105 - B02:2013)
Fastness to Rubbing	Wet: 4 Dry: 4 (ISO 105 - X12:2002)
Maintenance	Vacuum regularly. Professionally dry clean or wipe clean with a damp cloth.

Please note that ultimate seam performance is dependent on seam construction, and needle and thread type.
We recommend that appropriate sewing advice be taken.
Note: We reserve the right to alter technical specifications without notice.
The Unregistered Design Rights and the Copyright in all designs are the exclusive property of Camira Fabrics Limited.

F

Composition	95% Laine Vierge, 5% Polyamid. Teintures non métalliques.
Largeur	140cm minimum
Poids	400g/m ² ±5% (560g/lin.m. ±5%)
Répétition du motif	Balance: Largeur 14.5cm, Longueur 14.5cm Contact: Largeur 14.5cm, Longueur 57cm
Résistance à l'abrasion	60,000 cycles Martindale. Garantie de 5 ans (renseignements complémentaires disponibles)
Flammabilité	AS 1530.3, BS EN 1021 - 1:2006 (cigarette) BS EN 1021 - 2:2006 (allumette) BS 7176:2007 Low Hazard Prière de le mentionner lors de la commande: BS 5852:2006 Section 4 Ignition Source 5 si traitement FR BS 7176:2007 Medium Hazard si traitement FR Notez: Réaction au feu dépend du composite utilisé.
Solidité à la lumière	5 (ISO 105 - B02:2013)
Solidité au Frottement	Mouillé: 4 Sec: 4 (ISO 105 - X12:2002)
Nettoyage	Aspirer régulièrement. Nettoyage à sec professionnel. Autrement, essayer avec une étoffe humide.

Veuillez noter que le glaçage de la couture sous tension dépend de la structure de la couture, de l'aiguille et du fil. Nous recommandons de prendre conseil au préalable d'un professionnel.
Veuillez noter que nous réservons le droit de modifier les spécifications techniques sans préavis.
Les droits non-déposés sur les designs ainsi que les droits de copie sont la propriété exclusive de Camira Fabrics Limited.



Camira fabrics are
brought to Australasia
by Textilia

camira

D

Zusammensetzung	95% Schurwolle, 5% Polyamid. Nicht schwermetalhaltige Farbstoffe
Breite	140cm nutzbare Breite
Gewicht	400g/m ² ±5% (560g/lin.m. ±5%)
Rapport	Balance: Breite 14.5cm, Länge 14.5cm Contact: Breite 14.5cm, Länge 57cm
Scheuerfestigkeit	60,000 Martindale Scheuertouren 5 Jahre Garantie (Details auf Anfrage)
Feuersicherung	AS 1530.3, BS EN 1021 - 1:2006 (cigarette) BS EN 1021 - 2:2006 (match) BS 7176:2007 Low Hazard Bitte bei Auftragserteilung angeben: BS 5852:2006 Section 4 Ignition Source 5 wenn mit FR ausgerüstet BS 7176:2007 Medium Hazard wenn mit FR ausgerüstet Bemerkung: Schwereentflammbarkeit hängt von verwendetem Komponenten ab.
Lichtechtheit	5 (ISO 105 - B02:2013)
Reibechtheit	Nass: 4 Trocken: 4 (ISO 105 - X12:2002)
Reinigung	Regelmässig absaugen. Professionelle Trockenreinigung. Alternativ dazu mit einem feuchten Tuch abwischen.

Eine optimale Nähtaumenfestigkeit hängt von der Nahtlinie, der verwendeten Nadel und des Fadens ab.
Wir empfehlen daher Nähveruche durchzuführen.
Anmerkung: Wir behalten uns die Änderungen technischer Spezifikationen vor.
Die registrierten und nicht registrierten Urheberrechte an den Designierungen sind ausschließliches Eigentum der Camira.

ES

Composición	70% Lana Virgen, 30% Lino. Tintes no metálicos.
Ancho	140cm mínimo
Peso	400g/m ² ±5% (560g/lin.m. ±5%)
Repetición en el diseño	Balance: Ancho 14.5cm, Largo 14.5cm Contact: Ancho 14.5cm, Largo 57cm
Resistencia a la abrasión	60,000 Martindale Tours. Garantía de uso 5 años (más información disponible bajo consulta)
Inflamabilidad	AS 1530.3, BS EN 1021 - 1:2006 (cigarillo) BS EN 1021 - 2:2006 (cerilla) BS 7176:2007 Low Hazard Con tratamiento adicional de foamizado por favor especificar cuando se requiere en el pedido: BS 5852:2006 Section 4 Ignition Source 5 estando con tratamiento FR BS 7176:2007 Medium Hazard estando con tratamiento FR Condiciones ignifugas dependientes del tipo de foam utilizado
Solidez a la luz	5 (ISO 105 - B02:2013)
Solidez al rozamiento	Húmedo: 4 Seco: 4 (ISO 105 - X12:2002)
Limpieza	Limpiar con aspiradora con regularidad. Limpiar en seco, o bien lavar con un paño húmedo.

El deslizamiento de costura depende de su construcción así como el tipo de aguja e hilo empleados. Se recomienda que se tomen precauciones apropiadas para la costura.
Se reserva el derecho de modificar las especificaciones técnicas sin previo aviso.
Los derechos sobre dibujos no registrados y los derechos de autor sobre todos los dibujos son propiedad exclusiva de



at work*
with
Camira

AUSTRALIA
telephone: +61 8 9332 09
facsimile: +61 8 9332 04
web: atworkwithcamira.com
email: sales@atworkwithcamira.com
*at work is a brand of Textilia

at work*
with
Camira

NEW ZEALAND
telephone: +64 9 368 5768
facsimile: +64 9 368 5769
web: textilia.co.nz
email: info@textilia.co.nz
*at work is a brand of Textilia

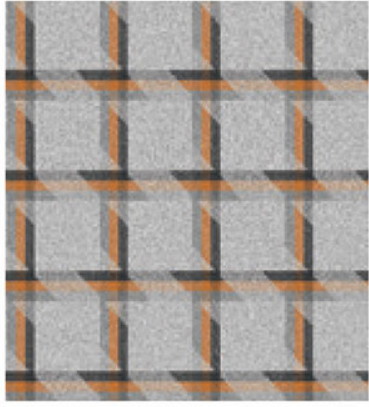
at work*
with
Camira

Landscape
Collection

Landscape Collection

“Inspired by the re-imagined plaids of the catwalks, the Landscape Collection is a tailored approach to meet the demands of the future office. Modular systems are increasingly used to travel through and define open workspace environments. Balance, Contact and Synergy can work in isolation or unison.”

Landscape Collection



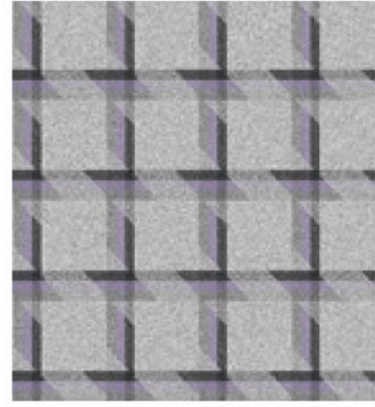
Balance
Symmetry LDB01



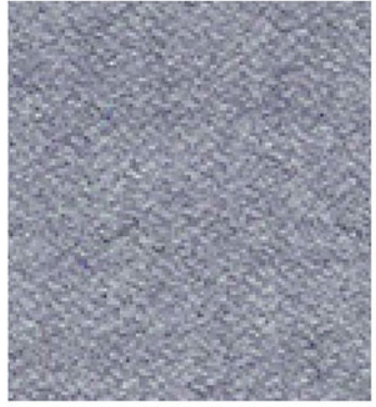
Synergy
Random LDS01



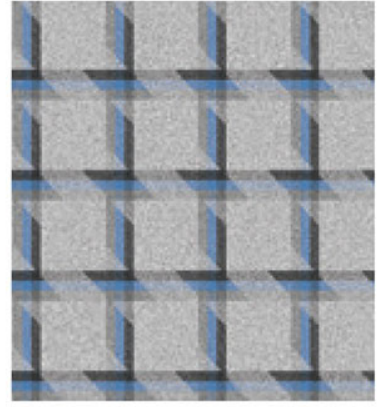
Contact
Connect LDC01



Balance
Align LDB05



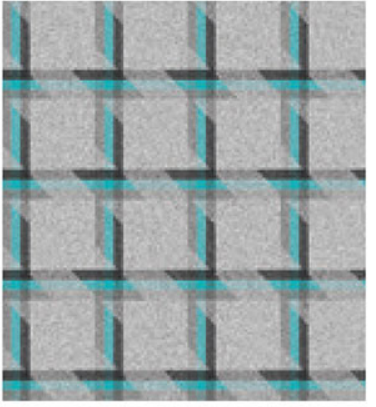
Synergy
Venture LDS05



Balance
Adapt LDB03



Synergy
Fortune LDS03



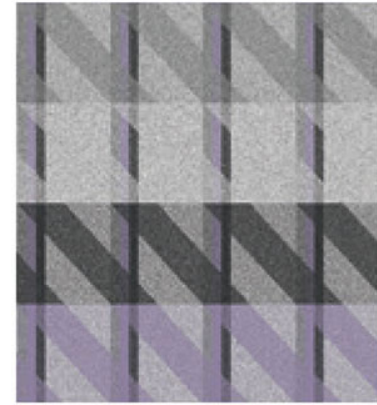
Balance
Focus LDB06



Synergy
Fuse LDS14



Synergy
Alliance LDS09



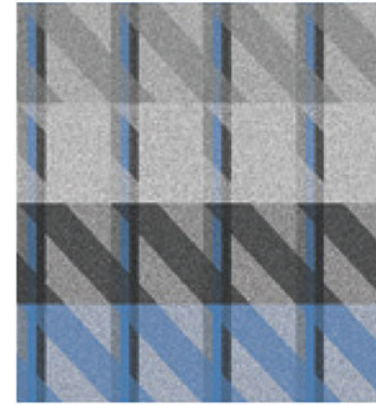
Contact
Network LDC05



Synergy
Combine LDS13



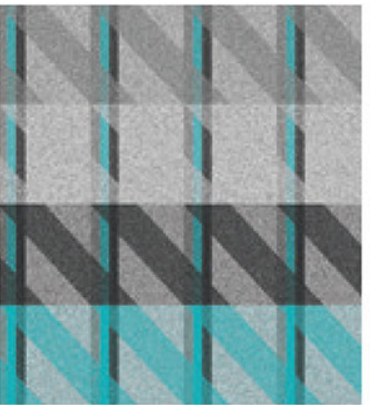
Synergy
Blend LDS11



Contact
Signal LDC03



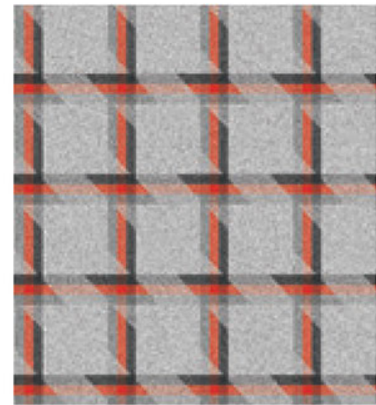
Synergy
Risk LDS06



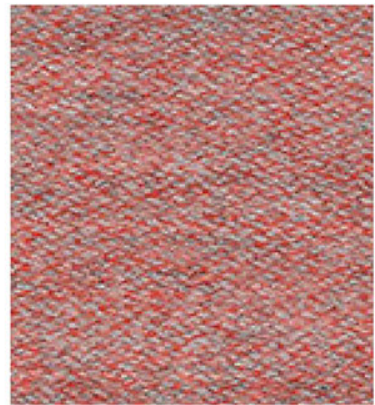
Contact
Reach LDC06



Synergy
Serendipity LDS08



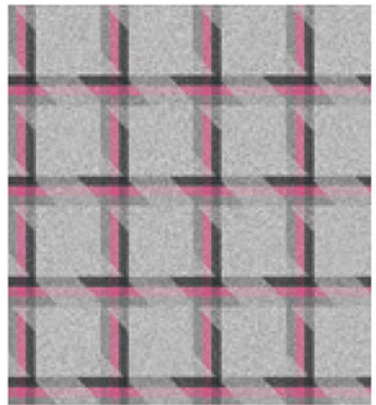
Balance
Equal LDB04



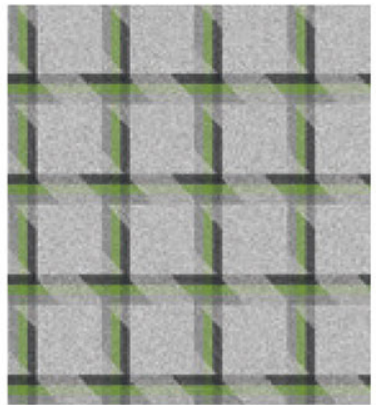
Synergy
Gamble LDS04



Synergy
Fate LDS07



Balance
Parallel LDB07



Balance
Tune LDB02



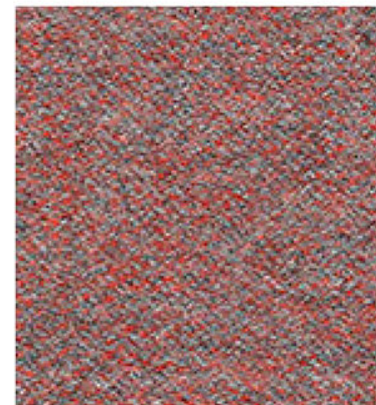
Synergy
Lucky LDS02



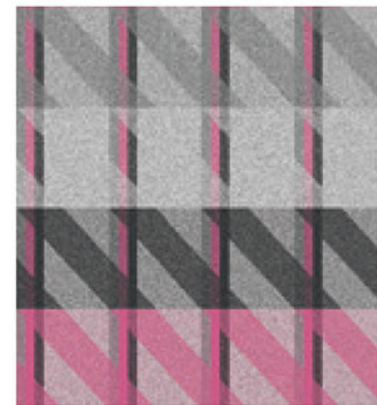
Synergy
Partner LDS16



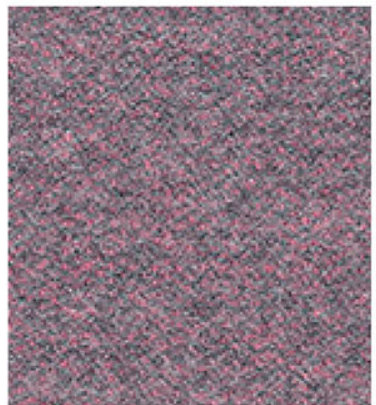
Contact
Converge LDC04



Synergy
Join LDS12



Contact
Companion LDC07



Synergy
Merge LDS15



Contact
Touch LDC02



Synergy
Union LDS10



Synergy
Mix LDS17